



Easy Storage

## HYDRODEFENSE® STORAGE SOLUTIONS KEEP YOUR FLOOD PLANKS™ READY FOR ACTION

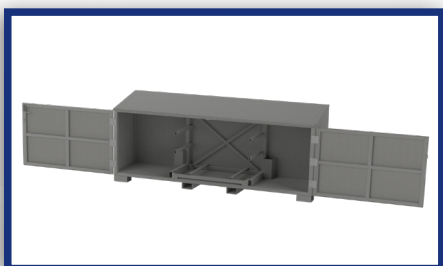
Your HydroDefense® Flood Planks™ are an important investment, and with a little care, they can provide many years of service. PS Flood Barriers offers several storage solutions designed to keep the elements of your HydroDefense Flood Plank system safe, well-organized and ready to be installed.



### HYDRODEFENSE® FLOOD PLANK™ CART

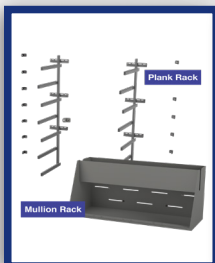
The HydroDefense Flood Plank Cart provides convenient storage and accessibility for HydroDefense Flood Planks while they aren't in use. When flooding conditions are imminent, it serves as an easy, reliable way to transport HydroDefense Flood Planks to the installation site, and away once flooding ends.

- Three levels for optimum storage – capacity varies by HydroDefense Flood Plank model:
- **FP-530:** holds up to 26 total planks
- **FP-530 Reinforced:** holds up to 21 total planks
- **FP-535:** holds up to 12 total planks
- Extra large casters w/ locks – easy plank transportation, extra stability
- Simple cam straps – keep planks from falling off during transportation
- Bins located on side of the cart – convenient latch storage and accessibility
- Rugged finish – made with mild steel, powder coat gray, zinc plated hardware



### HYDRODEFENSE® FLOOD PLANK™ STORAGE LOCKER

This storage system includes the Flood Plank Cart (without casters) and is constructed with 16 gauge galvalume sheeting in a powder coat gray finish. It can also be customized to fit unique requirements. Capacity (same as Flood Plank Cart) will vary by plank model.



### HYDRODEFENSE® FLOOD PLANK™ RACKING SYSTEM

This system is made up of two components, the Plank Rack and the Mullion Rack. You may order any combination of the two and each will be customized to the number of planks or mullions you need to store. This system can either be installed onto a wall in your facility or bolted to a shipping container. (PS Flood Barriers can provide a price for a shipping container with the racking system installed or you can secure your own shipping container and installation.)