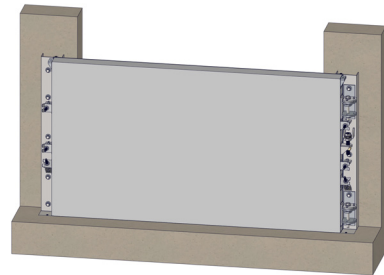
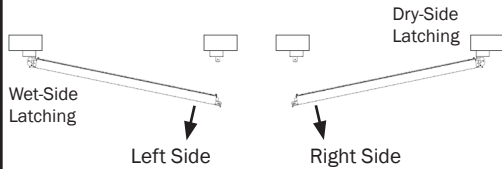


HSS-550 SINGLE MEASURING GUIDE & ORDER FORM

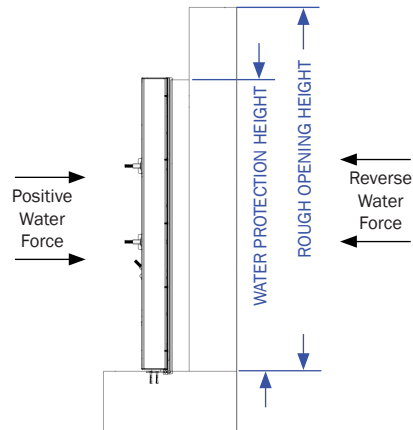


1150 S. 48TH STREET, GRAND FORKS, ND 58201
Phone: 701.746.4519 | **Toll Free:** 877.446.1519
Website: psfloodbarriers.com
Email: 4psinfo@psindustries.com

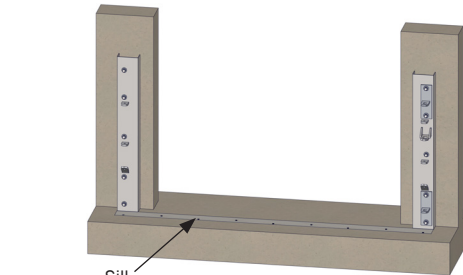
HINGE LOCATION:



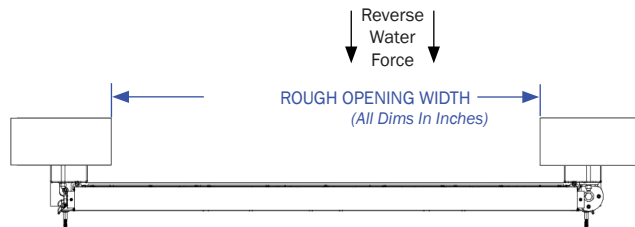
DEFAULT VIEW



SIDE VIEW



JAMB VIEW



TOP VIEW

SOLD/QUOTE TO:	
NAME:	
COMPANY:	
ADDRESS:	
CITY, STATE, ZIP:	
PHONE:	FAX:
EMAIL:	

PROJECT INFO:			
PROJECT NAME:			
OPENING NAME:		QUANTITY:	
ROUGH OPENING WIDTH:	(inches)	ROUGH OPENING HEIGHT:	(inches)
WATER PROTECTION HEIGHT:	(inches)	LOADING REQUIRED:	
HYDRODYNAMIC:	(FPS)	(PSF)	IMPACT: (LBS) " X "

HINGE LOCATION:	LATCHING LOCATION:	WATER FORCE:
LEFT SIDE	WET-SIDE	POSITIVE PRESSURE
RIGHT SIDE	DRY-SIDE	REVERSE PRESSURE

MOUNTING SURFACE:	MOUNTING LOCATION:	LIFTING TYPE:
CIP	WET-SIDE	LIFT SCREW
CMU (WALL THICKNESS IN INCHES) (GROUT-FILLED)	DRY-SIDE	HYDRAULIC
STRUCTURAL STEEL		

PANEL/FRAME MATERIAL:	SILL TYPE:	
ALUMINUM MILL FINISH (STANDARD)	316L STAINLESS STEEL	EMBEDDED ANGLE (STANDARD)
	No. 2b (MILL FINISH)	SURFACE MOUNTED PLATE
MILD STEEL (PAINTED)	No. 4 (BRUSHED FINISH)	NO SILL

PAINT OPTIONS:			
SHERWIN-WILLIAMS INDUSTRIAL ENAMEL	S/W#	COLOR:	sherwin-williams.com
SHERWIN-WILLIAMS MACROPOXY ACROLON			
POWDER COAT	RAL#	PRIMER ONLY	

STAMPED CALCULATIONS REQUESTED:			
YES	STATE	NO	(Registered professional engineer stamped calculations from within the state or territory the building will be constructed or substantially improved.)