

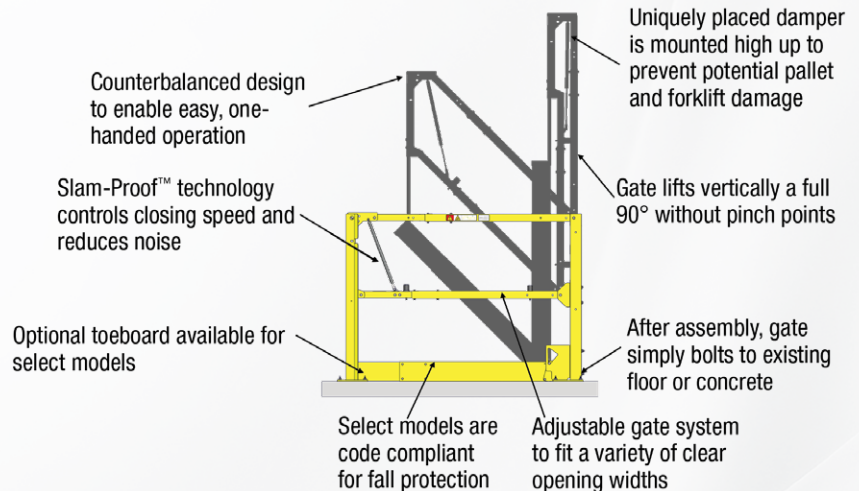
## EDGESAFE® SMART GATE

### THE SAFEST WAY TO KEEP THINGS MOVING IN YOUR WAREHOUSE

Improve employee and customer safety the smart way by utilizing the EdgeSafe® Smart Gate from PS Safety Access™ in your facility. Customizable to fit your specific applications, our Smart Gate is ideal for a variety of applications, including:

- Loading docks
- Fall protection/railing openings
- Machine guarding
- Equipment protection
- Ground-level traffic/pedestrian control
- Aisle violator
- Area perimeter protection
- Crowd control where forklift traffic (or other machinery) is present
- Mezzanines\*

*\*In applications where the product is positioned to protect a fall-edge, the person operating the product is required to implement another primary means of fall protection whenever the product is not closed.*



### START IMPROVING YOUR FACILITY TODAY WITH THE EDGESAFE SMART GATE:

- **Safety That Pays** – The EdgeSafe Smart Gate keeps your team safe while keeping your facility running efficiently
- **Extended Configurations** – Available in both Single (48" to 156") and Double (108" to 324") gate configurations to accommodate a variety of applications and opening sizes ranging from typical to extra large; the Double is well-suited for low headroom and wide area
- **Flexible Sizing** – Gate systems adjustable to fit a variety of clear opening widths
- **Easy Operation** – Counterbalanced design makes it easy for one person to operate the gate smoothly with just one hand
- **Slam-Proof™ Technology** – Features a unique damping system that provides safety to the operator while the gate is closing, controlling speed, reducing noise and adding life to the gate – all while being mounted high enough to prevent it from becoming damaged
- **Lifts Out Of The Way** – The gate lifts vertically 90 degrees (without pinch points) to ensure plenty of clearance
- **Built To Last** – Heavy-gauge steel and a powder coat yellow finish make it ideal for repetitive use
- **Ships Via FedEx Or UPS** – Once assembled, simply bolts to existing floor or concrete
- **Optional Toeboard** – Available for select gate sizes, an optional toeboard (sold separately) helps to increase edge protection from falling objects
- **Operator Push Button Add-On** – An optional push button feature (sold separately) adds an extra layer of protection when used on mezzanines and helps alleviate stress on personnel when utilized in high-use applications
- **Lock-Out Standard On All Gates** – Each model can be locked to prevent unauthorized access



## FLEXIBLE SIZING WITH YOUR APPLICATION IN MIND



**Access/Operator Workstation Control**



**Loading Dock Preparation/Fall Protection**



**Machine Guarding/Equipment Protection**



**Traffic Control/Operator Workstation Control**



**Outdoor Access Control**



**High-Use (With Operator Add On)**

Sold separately, this optional add-on allows you to open and close the gate with the simple touch of a button.

## STANDARD TECHNICAL DATA

### INSTALLATION:

Assembly required; after gate is fully assembled, product simply bolts to existing floor or concrete

### MATERIAL:

- Gate Rails: 1-3/4" square, mild steel tube, minimum 16-gauge, factory welded
- Gate Post: 3" square, mild steel tube, minimum 12-gauge, factory welded
- Gate Catch: 10-gauge formed mild steel, factory welded
- Fasteners: zinc plated
- Anchors: 3/8" expansion-type concrete anchors for installation into a minimum of 3,000 PSI concrete

### FINISH:

Powder Coat Safety Yellow

### PERFORMANCE RATING:

One-year warranty from date of shipment, excluding finishes

# EDGESAFE SMART GATE CONFIGURATIONS AND CODE COMPLIANCE

**PATENT**  
# US 10,907,314  
& PATENTS  
PENDING

## TYPICAL CONFIGURATIONS

Gate Model	Clear Opening Widths	Clearance Height	Overall Gate Width
ESG-60-PCY	48" - 78"	95 ½" - 125 ½"	64" - 94"
ESG-96-PCY	84" - 108"	131 ½" - 164 ½"	100" - 124"
ESG-120-PCY	108" - 132"	164 ½" - 188 ½"	124" - 148"
ESG-144-PCY	132" - 156"	188 ½" - 212 ½"	148" - 172"
ESGDBL-120-PCY	108" - 168"	95 ½" - 125 ½"	124" - 184"
ESGDBL-192-PCY	180" - 228"	131 ½" - 164 ½"	196" - 244"
ESGDBL-240-PCY	228" - 276"	164 ½" - 188 ½"	244" - 292"
ESGDBL-288-PCY	276" - 324"	188 ½" - 212 ½"	292" - 340"
ESG-60-PCY w/Toeboard (515186)	42 ½" - 72 ½"	95 ½" - 125 ½"	64" - 94"
ESG-96-PCY w/Toeboard (515187)	78 ½" - 102 ½"	131 ½" - 164 ½"	100" - 124"
ESGDBL-120-PCY w/Toeboard (515186)	97" - 157"	95 ½" - 125 ½"	124" - 184"

**FOR COMPLETE SIZE CHART  
AND MEASURING GUIDE  
CLICK THE LINKS BELOW:**



**EdgeSafe Smart Gate Single -  
Measuring Guide & Order Form**



**EdgeSafe Smart Gate Double -  
Measuring Guide & Order Form**



**Code Compliant:**  
OSHA 1910.29,  
ANSI A1264.1-2017,  
ISO 14122-3:2016, and  
Canada OHS SOR-86-304  
Part II code requirements

## SINGLE CONFIGURATIONS



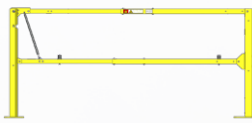
Approved For  
Fall Protection



**ESG-60-PCY**  
Optional Toeboard (515186) Qty. 1



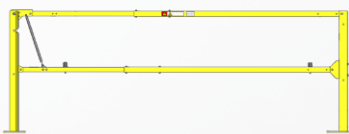
Approved For  
Fall Protection



**ESG-96-PCY**  
Optional Toeboard (515187) Qty. 1



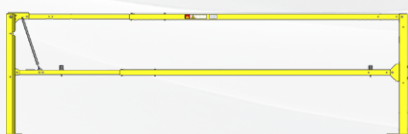
Approved For  
Fall Protection



**ESG-120-PCY**



Approved For  
Fall Protection

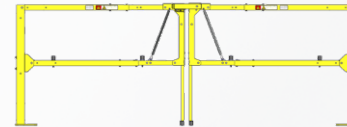


**ESG-144-PCY**

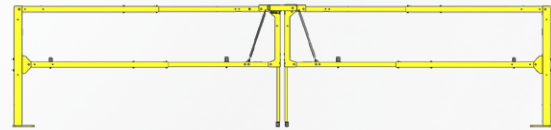
## DOUBLE CONFIGURATIONS



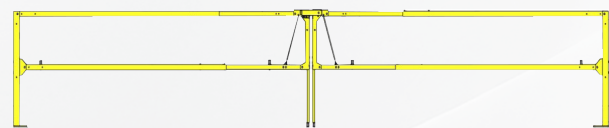
Approved For  
Fall Protection



**ESGDBL-120-PCY**  
Optional Toeboard (515186) Qty. 2



**ESGDBL-192-PCY**



**ESGDBL-240-PCY**



**ESG-288-PCY**

051722