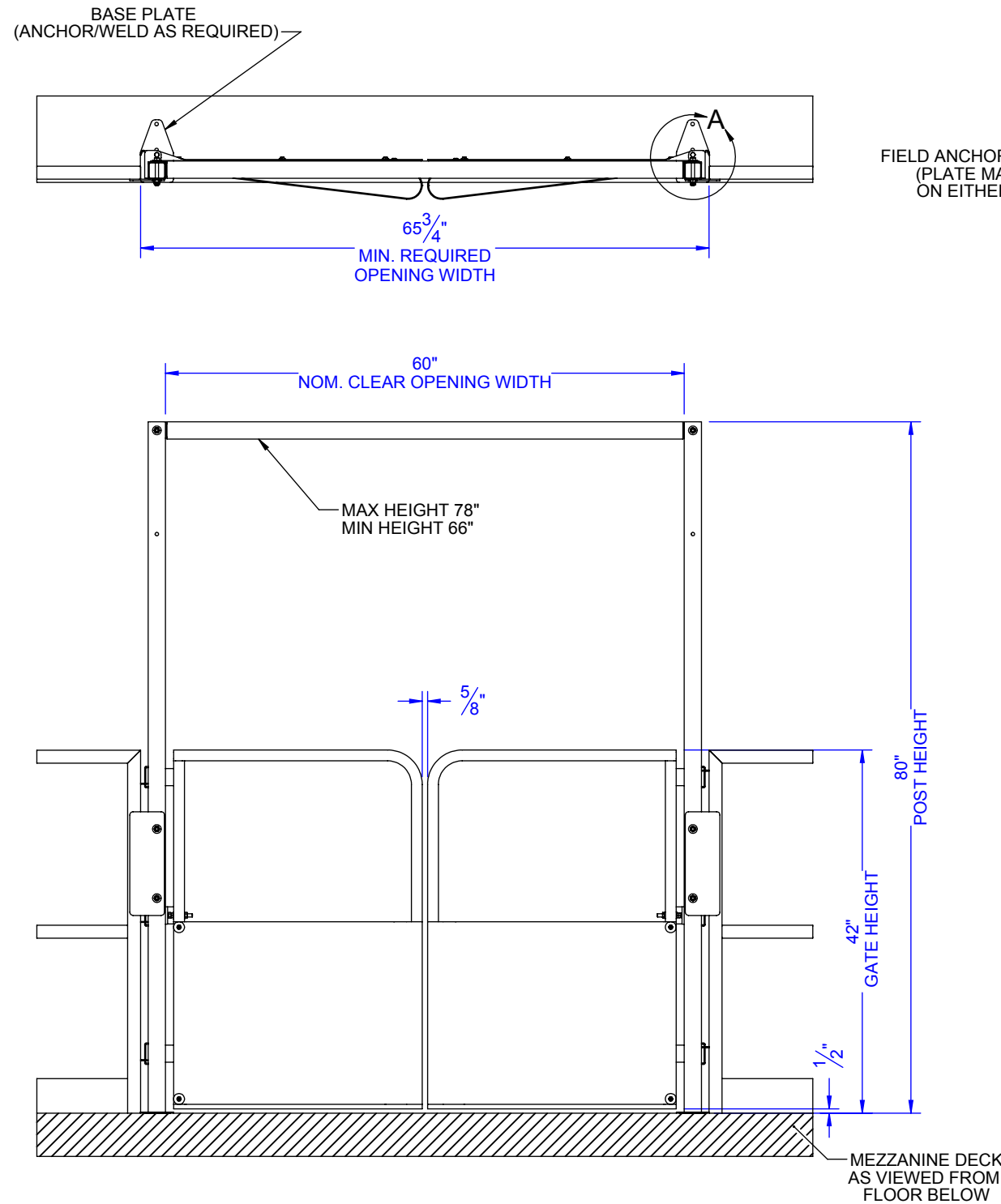
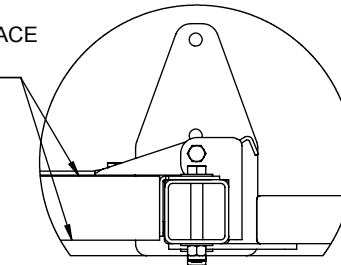


**WARNING: LOAD RATINGS OF GATES WILL VARY BASED ON INDIVIDUAL INSTALLATION**

**NOTE:**  
**GATE TO ATTACH TO MEZZANINE FLOOR AND BE ATTACHED TO ADJACENT RAILING SYSTEM TO PROVIDE STABILITY TO GATE COLUMNS.**



FIELD ANCHOR OR WELD IN PLACE  
 (PLATE MAY BE FASTENED  
 ON EITHER SIDE OF POST)



DETAIL A

**SUBMITTAL REVIEW**

APPROVER IS REQUIRED TO  ONE BOX ONLY AND SIGN

APPROVED; PROCEED WITH FABRICATION

APPROVED WITH CORRECTIONS; PROCEED WITH FABRICATION

REVISE AS NOTED & RESUBMIT

REJECTED

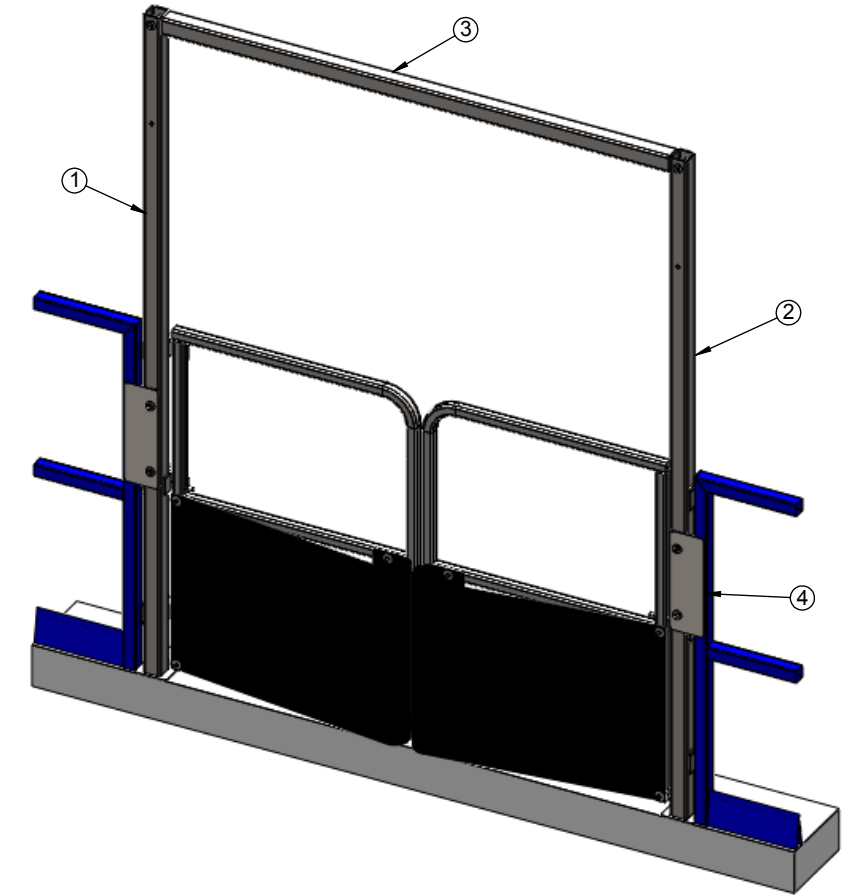
---

Signature \_\_\_\_\_ Date \_\_\_\_\_

---

Printed Name \_\_\_\_\_

B.O.M. IS FOR QTY - 1				
ITEM NO.	PART NO.	DESCRIPTION	Qty	U/M
1	511558	PLG;LEFT HAND ASSY-60-SST	1	EA
2	511559	PLG;RIGHT HAND ASSY-60-SST	1	EA
3	503246	PLG;ASSY CROSS BAR-60" SST	1	EA
4	503196	PLG;VERTICAL POST PLATE SS	2	EA
5	506973	PLG;CARTON;84" X 7.5" X 44", KRAFT	1	EA
6	503199	BOLT;HEX 3/8" X 16 X 2 3/4 SS	6	EA
7	501945	WASHER;FLAT 3/8" SS	8	EA
8	501119	NUT;NYLOCK 3/8" X 16 316SS	6	EA



- GATE ARM:** FORMED 1 1/4" SQUARE, 11GA TYPE 304 STAINLESS STEEL
- COLUMNS/CROSSBAR:** 2" SQUARE, 11GA TYPE 304 STAINLESS STEEL
- HINGE SPRING:** TORSION TYPE, STAINLESS STEEL PROVIDE (3) SPRINGS PER GATE, HOUSED WITHIN HINGE PIVOT.
- TEARDROP IMPACT BUMPERS:** HIGH IMPACT CROSS-LINKED POLYETHYLENE BUMPERS WITH 3" PROJECTION. BLACK IN COLOR
- GATE OPERATION:** ALLOWS FOR 180° OF TRAVEL.
- FINISH:** FINISH ON ALL EXPOSED SURFACES TO BE TYPE 304-2B STAINLESS STEEL WELDS TO BE GROUND NOT POLISHED.

FINISH:  
 304 STAINLESS STEEL  
 DEBURRING - EDGE SANDING AND/OR FILING ONLY ARE PERMISSIBLE  
 NO SURFACE SANDING OR GRINDING

REV.	REVISIONS	DATE	REVISED BY	PRODUCT DESCRIPTION: PALLET GATE, SST 60" X 84"	SN/WO:	PART #: PLG-6084-SST
				CUSTOMER:	DWG STATUS: <b>APPROVAL DRAWING</b>	UNLESS OTHERWISE SPECIFIED
				CUSTOMER PO #:	ESTIMATED ASSEMBLY WEIGHT: <b>287.68 LBS.</b>	LINEAR ±.0312" (1/32")
				SALES ORDER NAME: PS DOORS - STOCK	DWG #: PLG-6084-SST	CUTOUT ±.0156" (1/64")
				SALES ORDER #:	DWG BY: adeshaw	SQUARENESS ±.0625" (1/16")
					CHECKED: /	ANGULAR ±.5°
					REV: B+	

