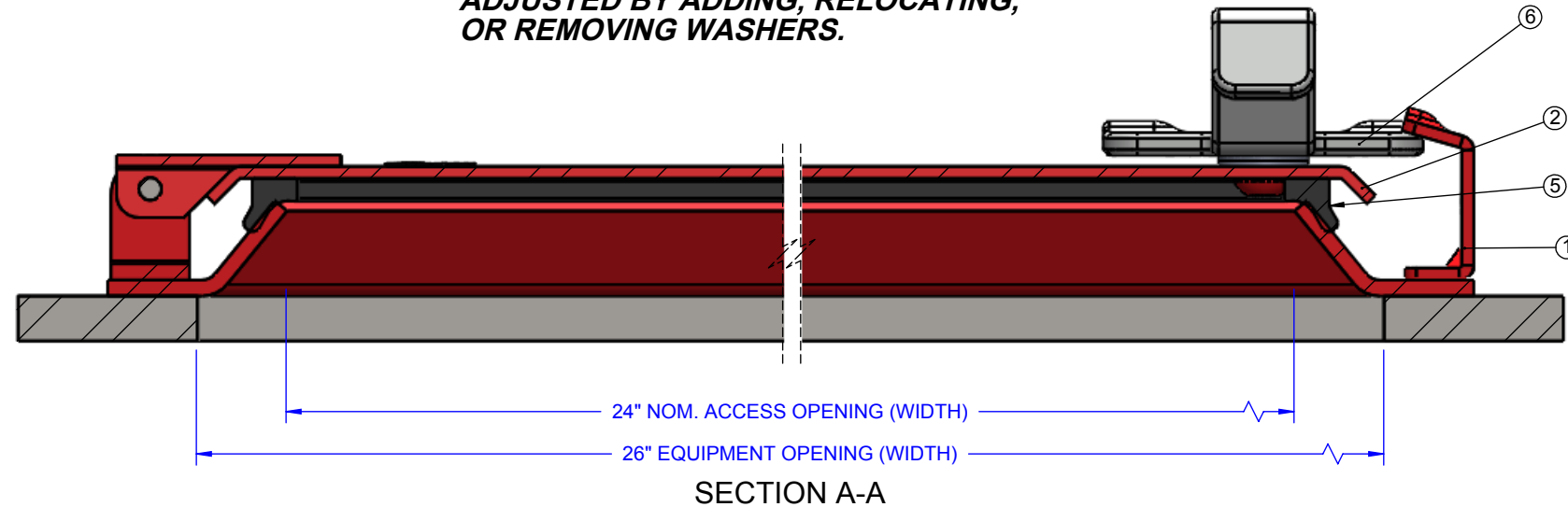
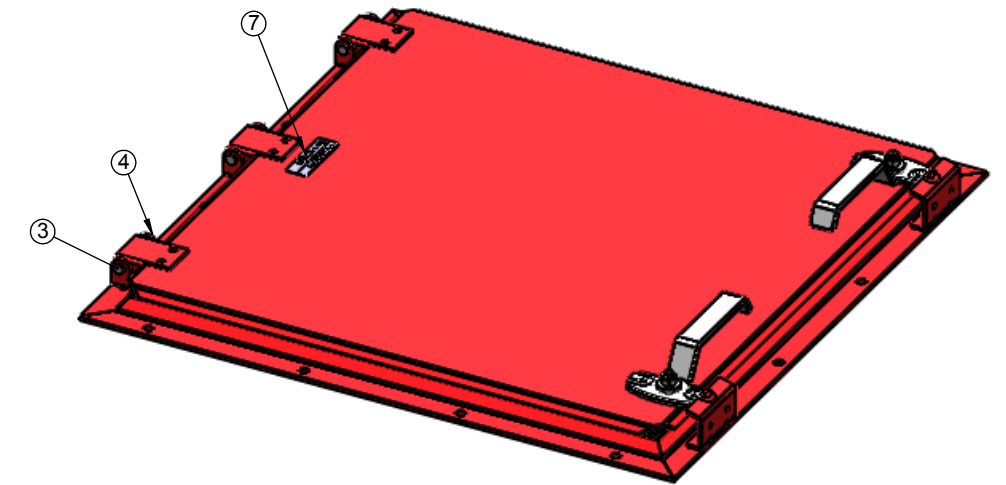
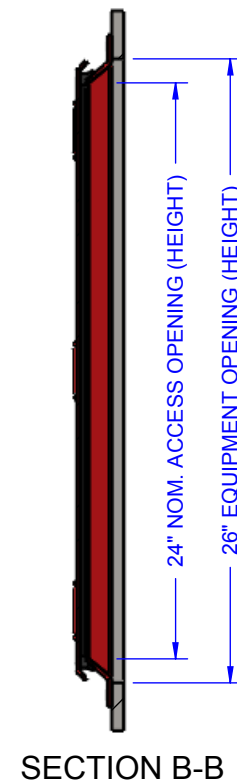
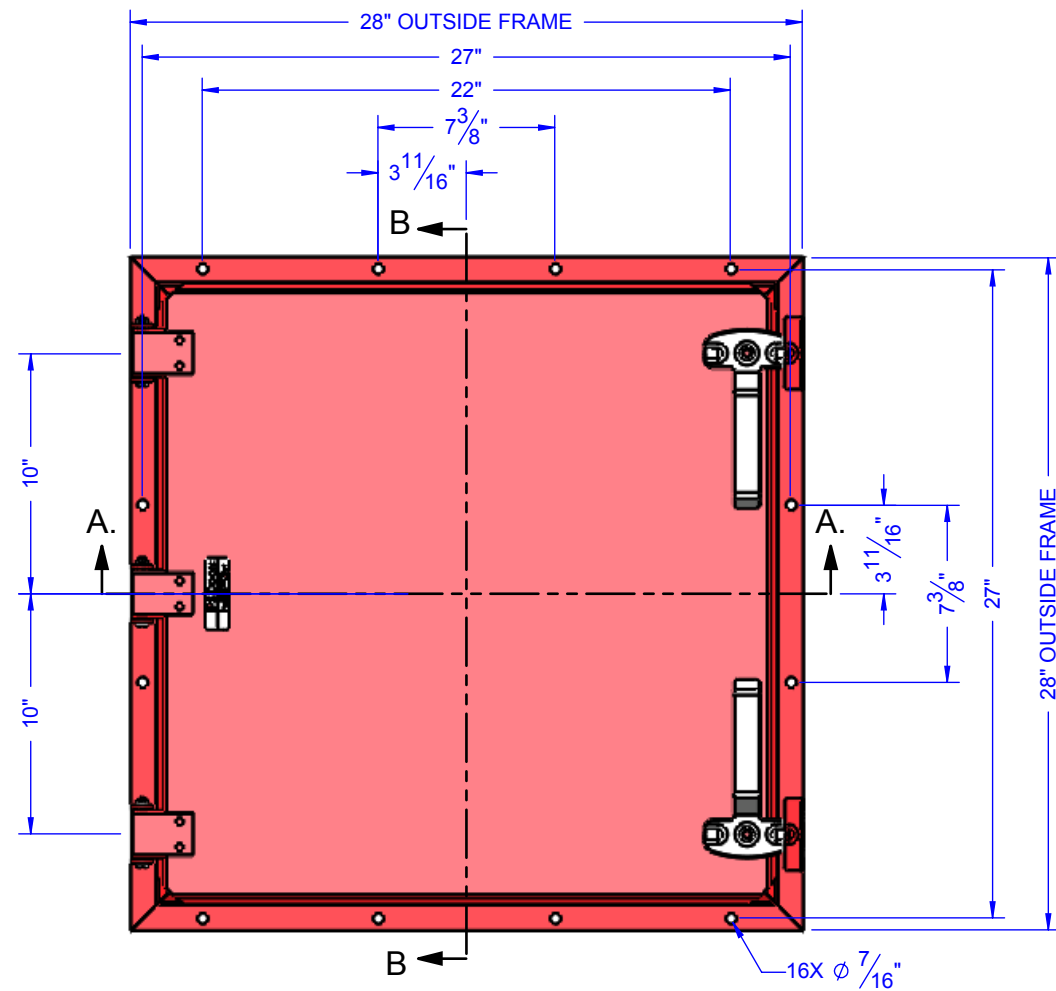


LATCHING FORCE OF HANDLE CAN BE ADJUSTED BY ADDING, RELOCATING, OR REMOVING WASHERS.



ITEM NO.	PART NO.	DESCRIPTION	QTY
1	FRMWLD-WM242407	FRAME WELDMENT;24X24-MS	1
2	CVR WLD-SM242410Q	COVER WELDMENT;24X24-MS	1
3	511677	BOLT;HEX1/4"20X2-3/4 SS	3
4	511679	NUT;REVLOCK,1/4" 20 SS	3
5	502012;WSM2424S	SEAL-EPDM (-50° TO 205° F)	1
6	510092	ACH;DETENT HANDLE ASSY-MS	2
7	500582	NAMEPLATE; PS DOORS, ALUM	1
8	508114	CARTON; ACCESS HATCH, 24"X24"	1



MATERIAL:
MILD STEEL (STANDARD)

FINISH:
PS DOORS STANDARD POWDER COAT GRAY

SEAL TYPE:
STANDARD - EPDM (-50° TO 205° F)

MILD STEEL
MATERIAL: (UNLESS OTHERWISE NOTED)
-COVER: 10 GA. ASTM-A-569
-FRAME: 7 GA. ASTM-A-569
-HARDWARE: ASTM-A-569

FINISH: (UNLESS OTHERWISE NOTED)
-COVER, FRAME, AND HARDWARE TO BE SHERWIN WILLIAMS POWDER COAT GRAY
-FASTENERS: ZINC PLATED
-LATCH HANDLE(S): ZINC PLATED

ESTIMATED PART/ASSY WEIGHT: 54.45 LBS.

FINISH: Standard Polyester Powder Coat
Sherwin Williams 49 Gray

REV.	REVISIONS	DATE	REVISED BY

DOOR/OPENING NAME: ACHWSM24240710SQ5 C+	SN: TBD	SALES ORDER #: TBD	QTY: TBD
PRODUCT: ACCESS HATCH;MILD 24X24	DWG STATUS: APPROVED FOR CONSTRUCTION	DATE:	SCALE: NTS
CUSTOMER: TBD	DWG #: GEN-ACHWSM24240710SQ5	CHECKED: /	
CUST PO #: TBD	DWG BY: bsmette		
SALES ORDER NAME: TBD			



1150 48th St. S
GRAND FORKS, ND 58201
PH. 701-746-4519
FAX 701-746-8340

SHEET #1 OF 1 REV: C+